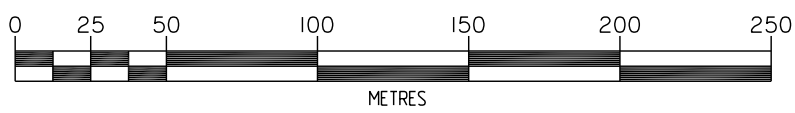


Bennett & Francis Pty. Ltd. A.C.N. 053 307 172  
 certify that the details shown on this  
 sketch plan are correct.

**BENNETT AND FRANCIS**  
 PTY LTD  
 A.C.N. 053 307 172  
 Director  
 Date: 27/2/2007

**TITLE REFERENCE**  
 18195037



**PLAN FOR LEASE PURPOSES**

Being Part of the Ground Floor of a Warehouse)  
 Of Lease 17  
 In Lot 1 on RP115818,  
 Original Portion 136,  
 Parish of Yeerongpilly  
 County of Stanley.

ALL AREAS SHOWN HEREON ARE  
 CALCULATED TO THE NEAREST  
 SQUARE METRE.

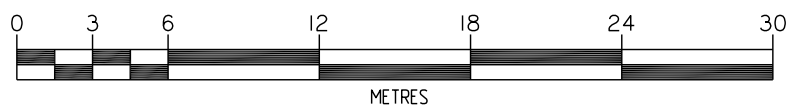
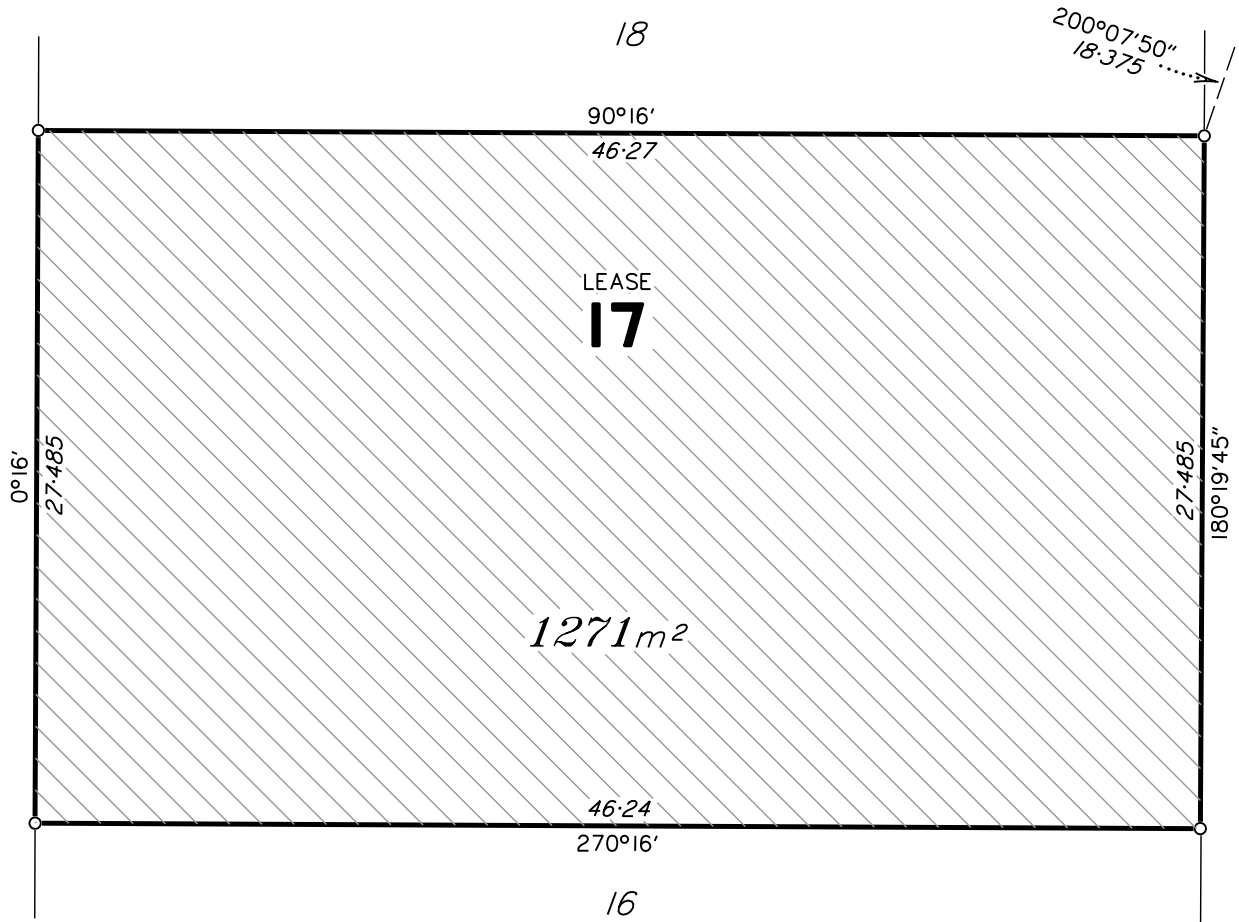


**Bennett & Francis Pty. Ltd.**  
 Surveying, Cartography, Computing,  
 Mapping, Town Planning.  
 ACN. 053 307 172  
 35 Peel Street,  
 South Brisbane. Q.4101,  
 Phone (07) 3239 5444  
<http://www.bfsurveys.com.au>

Drawn JC	Date 6/02/07
F.W. BD	F.B. 07-002
File 02168401	Checked JRW
Scale 1:2500	Approved JRW
Plan Ref. <b>021684.01</b>	



# DIAGRAM



Tenancy measured in accordance with Gross Lettable Area (GLA) as defined in Property Council of Australia Limited March 1997 Method of Measurement.