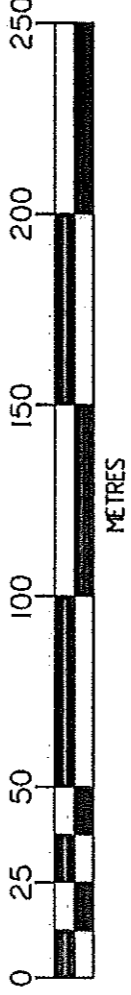


Bennett & Francis Pty. Ltd. A.C.N. 053 307 172
 certify that the details shown on this
 sketch are correct.

BENNETT & FRANCIS
 Licensed Surveyors
 A.C.N. 172 053 693
 Director
 Date: 28/10/05
 COMMON

TITLE REFERENCE
 18195037



PLAN FOR LEASE PURPOSES

(Being part of a two storey office building)

Of LEASE 7

In Lot 1 on RP115818,
 Original Portion 136,
 Parish of Yeerongpilly
 County of Stanley.

ALL AREAS SHOWN HEREON ARE
 CALCULATED TO THE NEAREST
 SQUARE METRE.



Bennett & Francis Pty. Ltd.

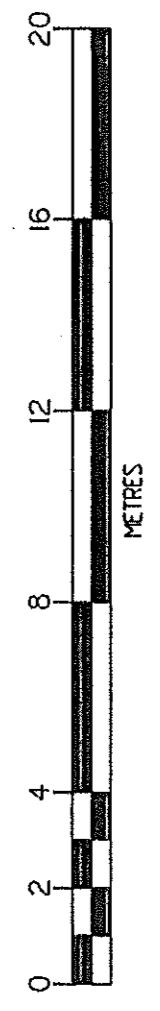
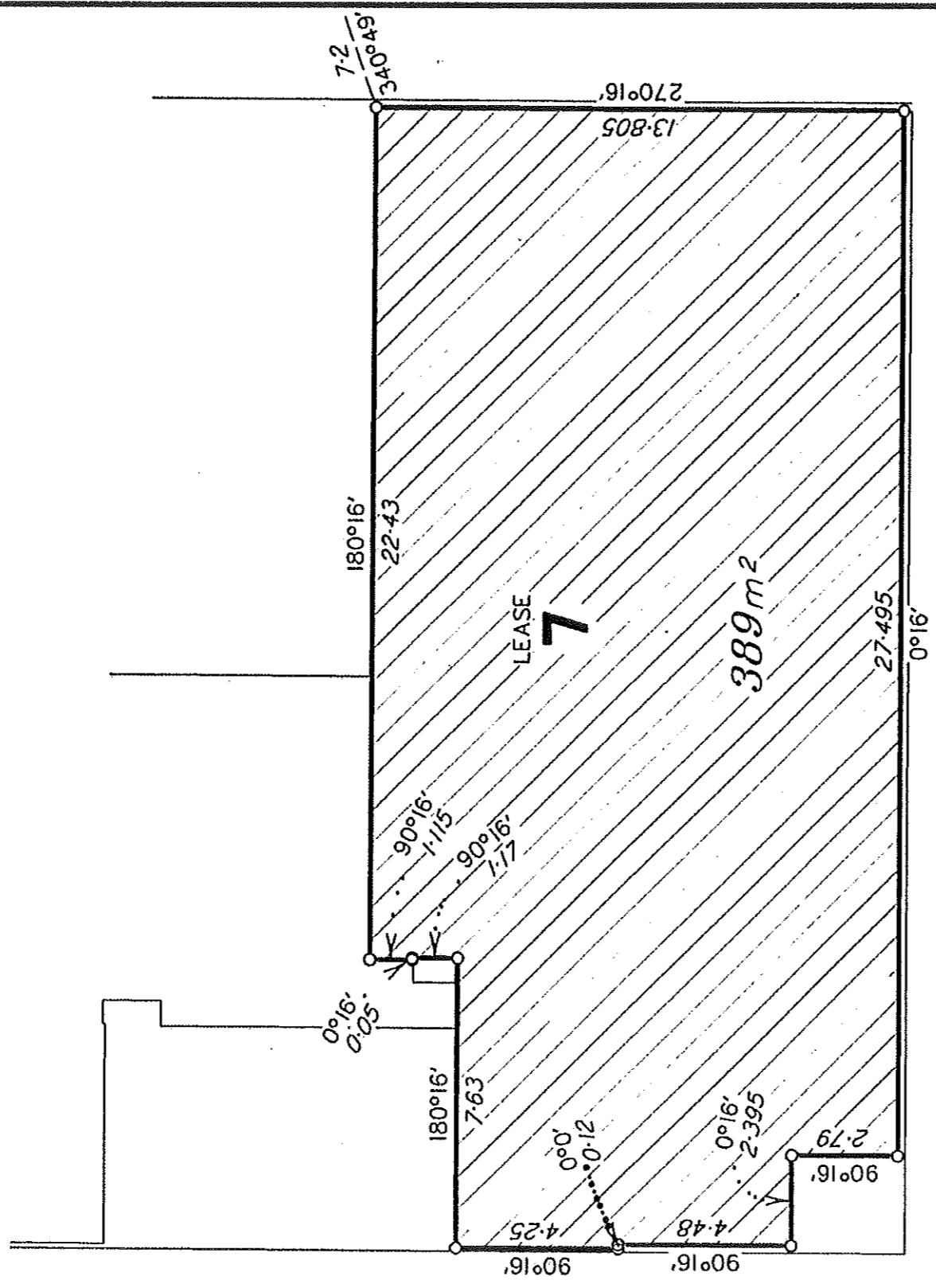
Surveying, Cartography, Computing,
 Mapping, Town Planning.

ACN. 053 307 172

35 Peel Street,
 South Brisbane, Q.4101,
 Phone (07) 3239 5444
<http://www.bfsurveys.com.au>

Drawn JRW	Date 28/10/05
F.W. JRW	F.B. 05-043
File 01761601	Checked
Scale 1:2500	Approved
Plan Ref. 017616.01	

DIAGRAM



Tenancy measured in accordance with Net Lettable Area – Office Buildings (NLA) as defined in Property Council of Australia Limited March 1997 Method of Measurement.