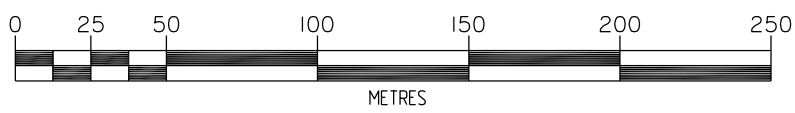


Bennett & Francis Pty. Ltd. A.C.N. 053 307 172  
 certify that the details shown on this  
 sketch plan are correct.

**BENNETT AND FRANCIS**  
 Licensed Surveyors  
 A.C.N. 053 307 172  
 Director  
 Date: 1/12/09

LEASE  
 See Diag. Sheet 2

**TITLE REFERENCE**  
 18195037



**PLAN FOR LEASE PURPOSES**

(Being part of the Ground Floor of a Building)  
 Of LEASE 1

In Lot 1 on RP115818,  
 Original Portion 136,  
 Parish of Yeerongpilly  
 County of Stanley.

ALL AREAS SHOWN HEREON ARE  
 CALCULATED TO THE NEAREST  
 SQUARE METRE.

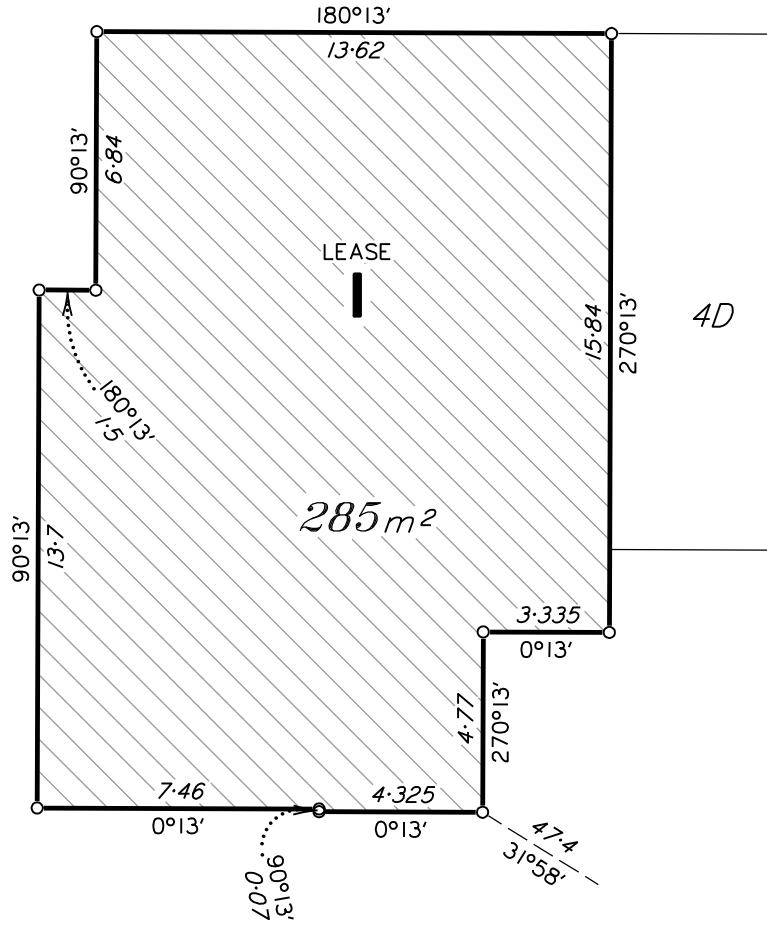


**Bennett & Francis Pty. Ltd.**  
 Surveying, Cartography, Computing,  
 Mapping, Town Planning.  
 ACN. 053 307 172  
 25 Donkin Street,  
 South Brisbane. Q.4101,  
 Phone (07) 3239 5444  
<http://www.bfsurveys.com.au>

Drawn JKW	Date 1/12/09
F.W. PH	F.B.
File 02385601	Checked
Scale 1:2500	Approved
Plan Ref. <b>023856.01</b>	



**DIAGRAM**



Tenancy measured in accordance with Net Lettable Area – Office Buildings (NLA) as defined in Property Council of Australia Limited March 1997 Method of Measurement.

Plan Ref. **023856.01**