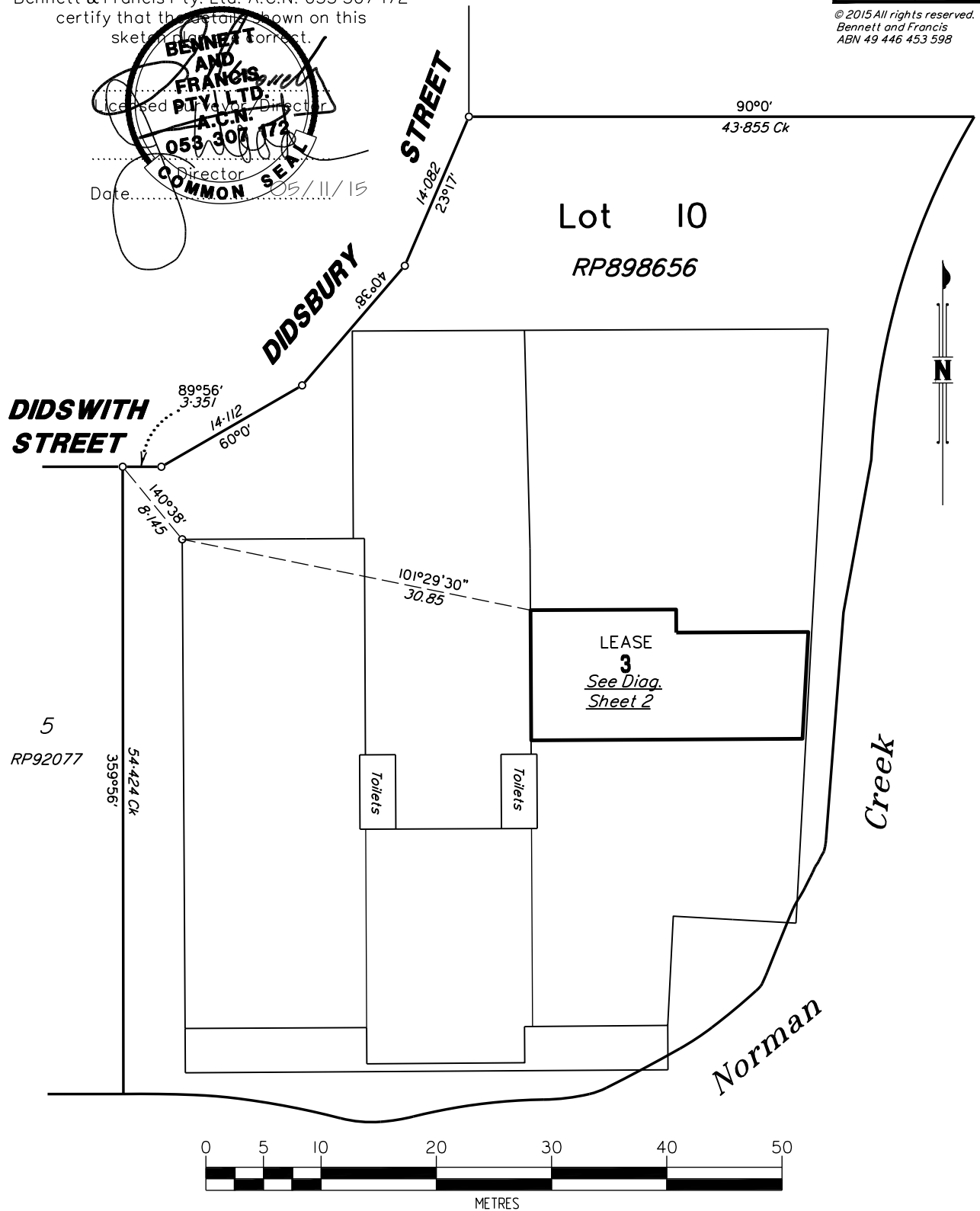


Bennett & Francis Pty. Ltd. A.C.N. 053 307 172
 certify that the details shown on this
 sketch are correct.

© 2015 All rights reserved.
 Bennett and Francis
 ABN 49 446 453 598

BENNETT AND FRANCIS PTY LTD
 Licensed Surveyor
 A.C.N. 053 307 172
 Director
 COMMON SEAL
 Date: 05/11/15



PLAN FOR LEASE PURPOSES

TITLE REFERENCE
 50141148

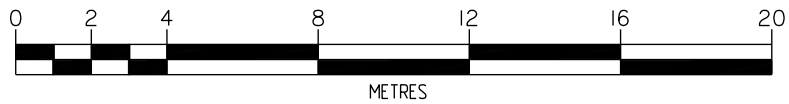
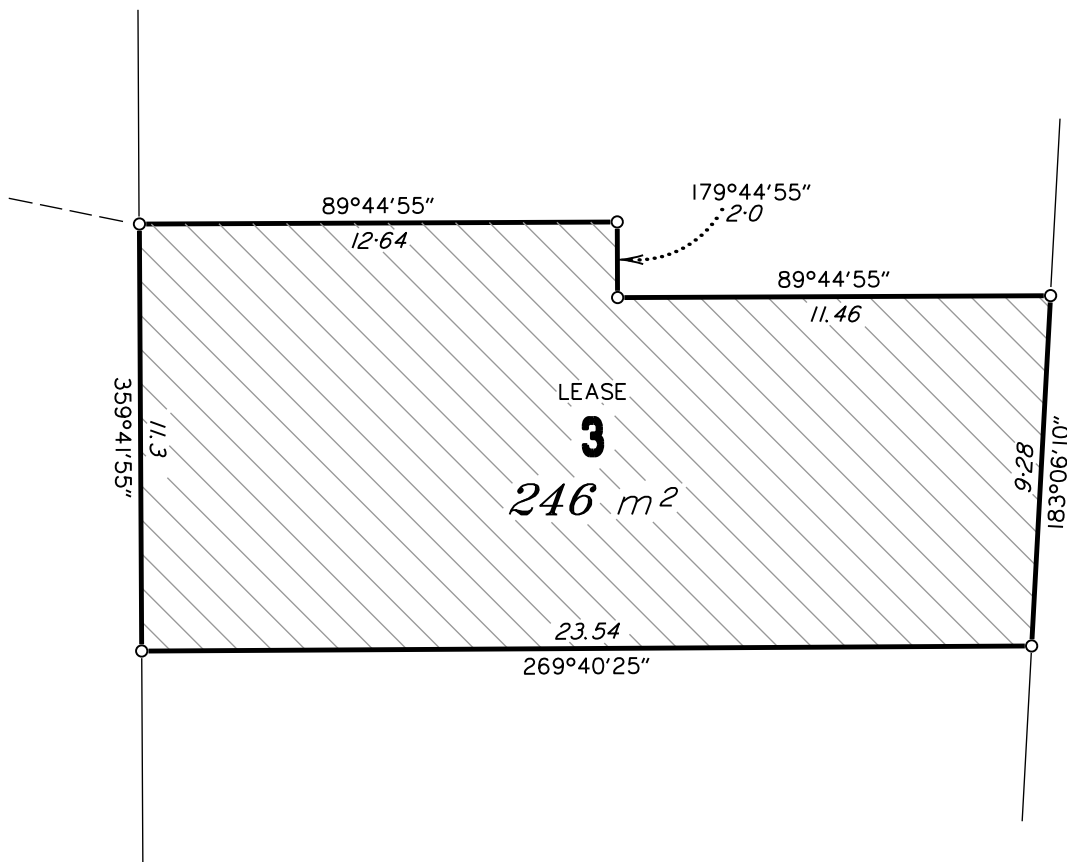
(Being part of a Warehouse Complex)

Of Lease 3
 In Lot 10 on RP898656,
 Parish of South Brisbane,
 County of Stanley.

ALL AREAS SHOWN HEREON ARE
 CALCULATED TO THE NEAREST
 SQUARE METRE.

 <p>Bennett & Francis Pty. Ltd. Surveying, Cartography, Computing, Mapping, Town Planning. ACN. 053 307 172 25 Donkin Street, West End Q 4101 Phone (07) 3239 5444 http://www.bfsurveys.com.au</p>	Drawn NB	Date 6/11/15
	F.W. NB	F.B. 2015-09
	File 03059601	Checked JRW
	Scale A4	Approved JRW
Plan Ref. 030596.01		

DIAGRAM



Tenancy measured in accordance with Gross Lettable Area (GLA) as defined in Property Council of Australia Limited March 1997 Method of Measurement.

Plan Ref.
030596.01