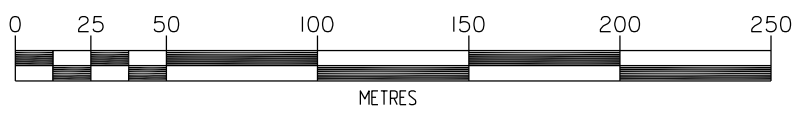


Bennett & Francis Pty. Ltd. A.C.N. 053 307 172
 certify that the details shown on this
 sketch plan are correct.

BENNETT AND FRANCIS PTY. LTD.
 Licensed Surveyor Director
 A.C.N. 053 307 172
 Date: 27/7/2008

TITLE REFERENCE
 18195037



PLAN FOR LEASE PURPOSES

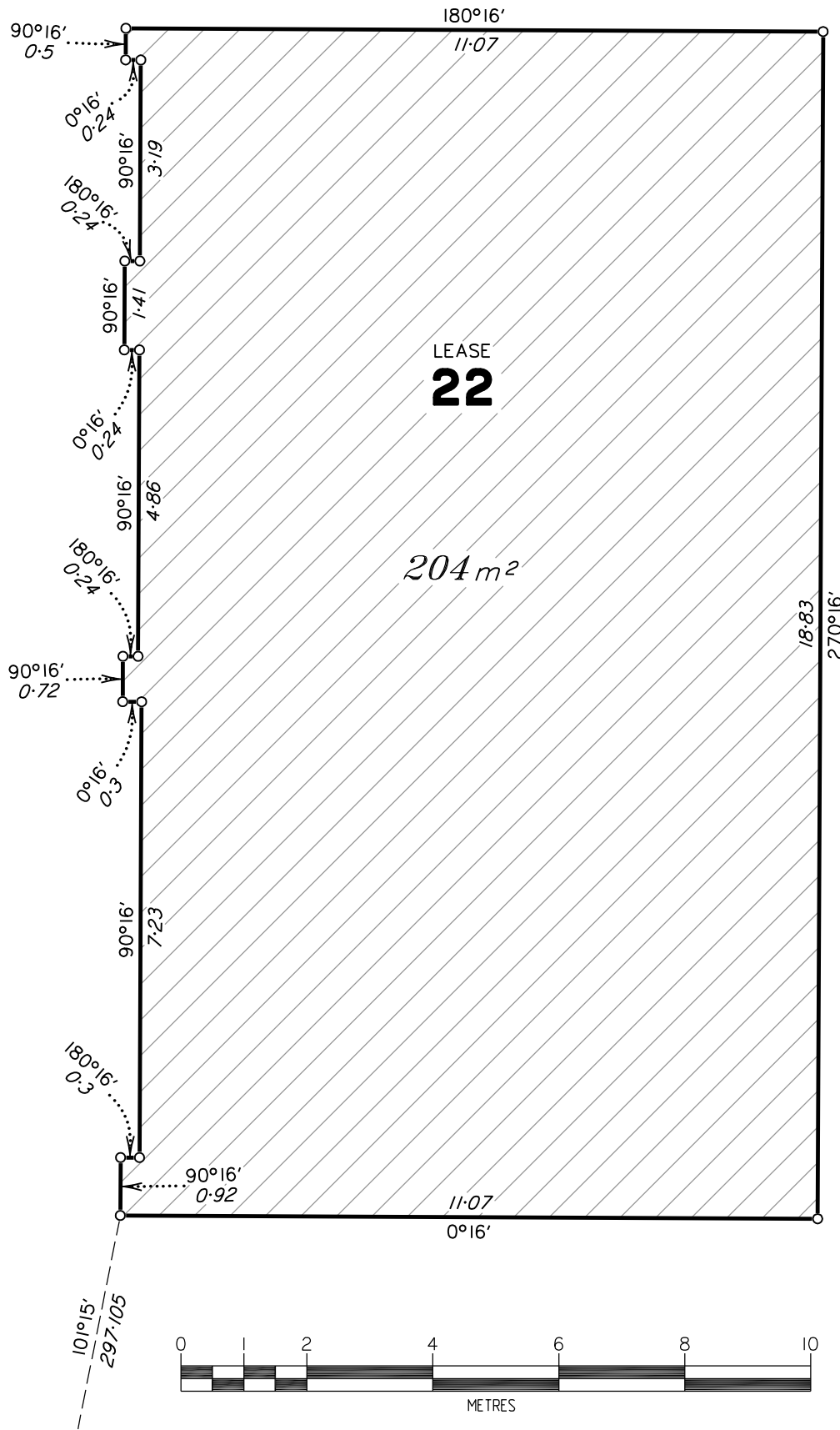
Being a one storey warehouse
 OF LEASE 22
 In Lot 1 on RP115818,
 Original Portion 136,
 Parish of Yeerongpilly
 County of Stanley.

ALL AREAS SHOWN HEREON ARE
 CALCULATED TO THE NEAREST
 SQUARE METRE.

 <p>Bennett & Francis Pty. Ltd. Surveying, Cartography, Computing, Mapping, Town Planning. ACN. 053 307 172 35 Peel Street, South Brisbane. Q.4101, Phone (07) 3239 5444 http://www.bfsurveys.com.au</p>	Drawn DS	Date 28.7.08
	F.W. DS	F.B. 08.013
	File 02240001	Checked DS
	Scale 1:2500	Approved JRW
	Plan Ref. 022400.01	



DIAGRAM



20

Tenancy measured in accordance with Gross Lettable Area (GLA) as defined in Property Council of Australia Limited March 1997 Method of Measurement.