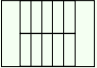





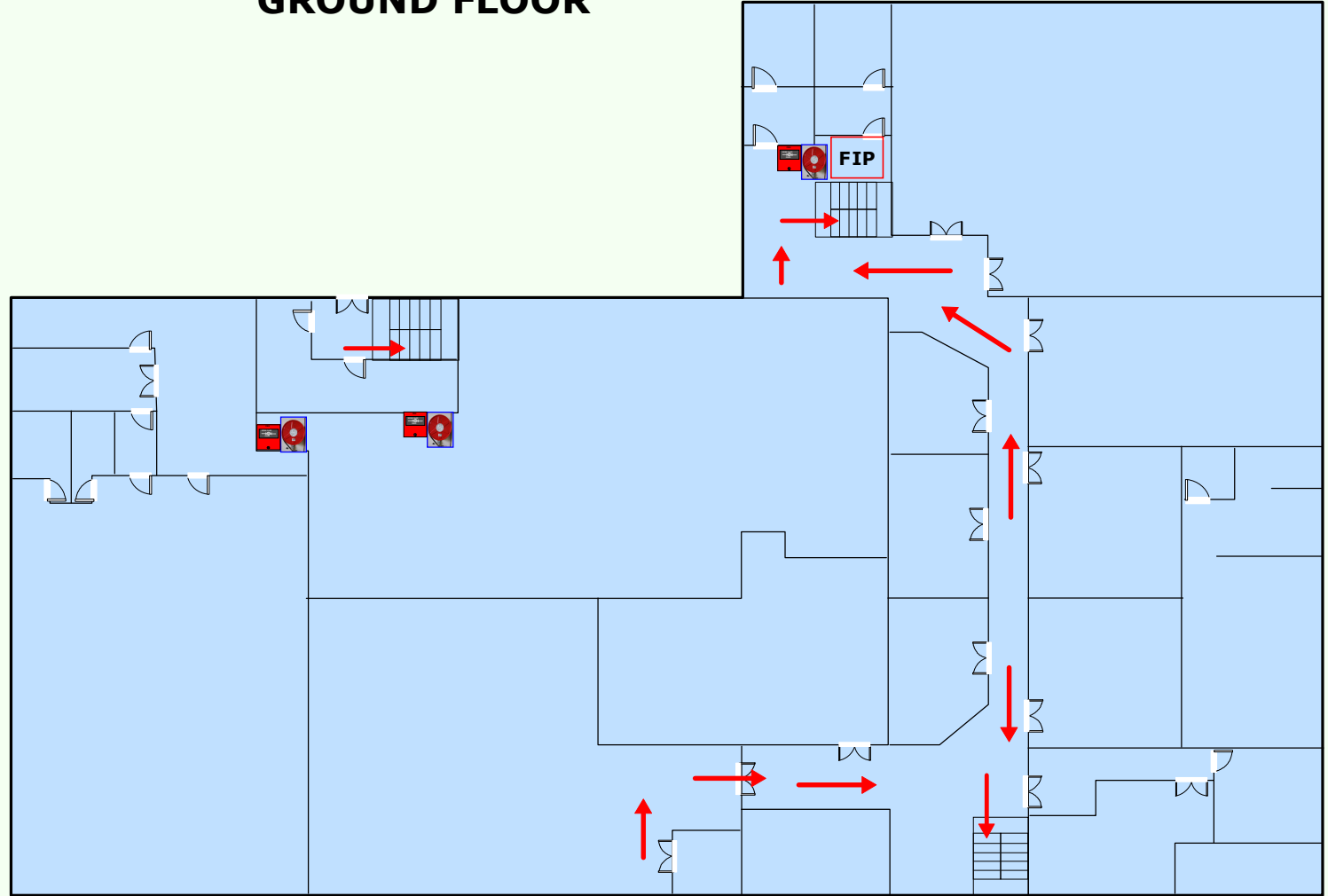


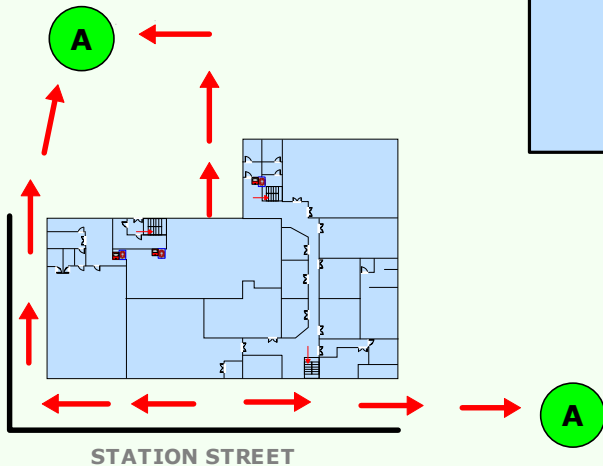
# YEERONGPILLY CORPORATE PARK EMERGENCY EVACUATION FIRE PLAN GROUND FLOOR

## LEGEND

-  STAIRS
-  EXIT ROUTE
-  FIRE HOSE REEL
-  MANUAL CALL POINT
-  ASSEMBLY AREA
-  FIRE INDICATOR PANEL

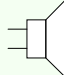


STATION STREET



**Alert Alarm**  **Beep Beep**

On the sounding of the Alert alarm  
check for signs of fire and smoke  
Evacuate if necessary

**Evacuation Alarm**  **Whoop Whoop**

On the sounding of the Evacuation alarm,  
evacuate via the nearest fire exit immediately  
and proceed to your assembly area

