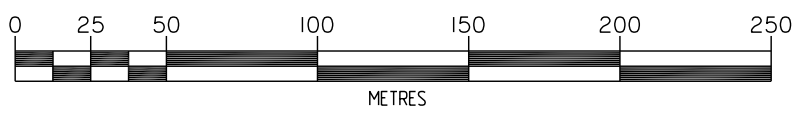


Bennett & Francis Pty. Ltd. A.C.N. 053 307 172
 certify that the details shown on this
 sketch are correct.
BENNETT AND FRANCIS
 AND
FRANCIS
 PTY. LTD.
 A.C.N. 053 307 172
 Licensed Surveyor / Director
 Date: 3/4/07

LEASE 6A
 See Diag.
 Sheet 2

TITLE REFERENCE
 18195037



PLAN FOR LEASE PURPOSES

(Being part of the ground floor of an office building)

Of LEASE 6A
 In Lot 1 on RP115818,
 Original Portion 136,
 Parish of Yeerongpilly
 County of Stanley.

ALL AREAS SHOWN HEREON ARE
 CALCULATED TO THE NEAREST
 SQUARE METRE.

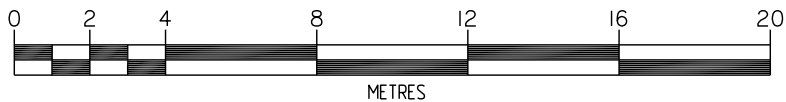
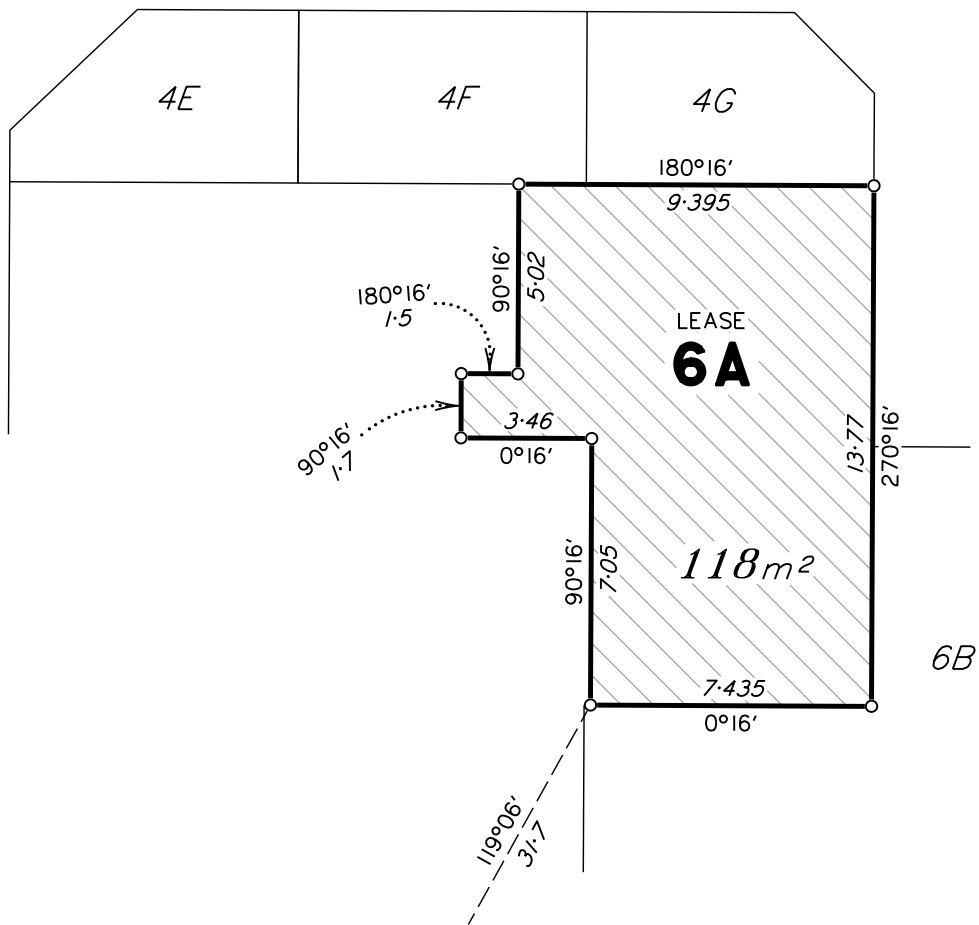
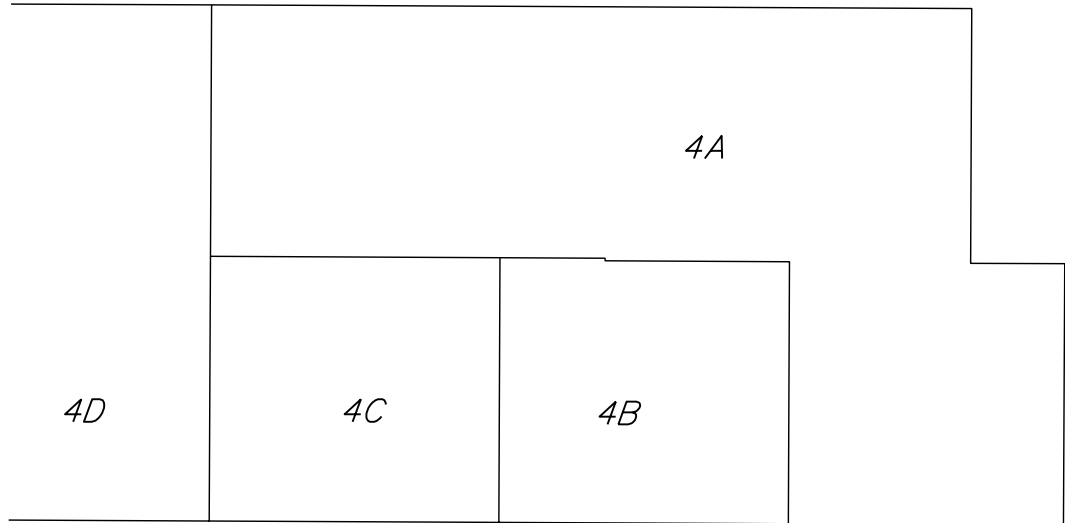


Bennett & Francis Pty. Ltd.
 Surveying, Cartography, Computing,
 Mapping, Town Planning.
 ACN. 053 307 172
 35 Peel Street,
 South Brisbane. Q.4101,
 Phone (07) 3239 5444
 http://www.bfsurveys.com.au

Drawn JKW	Date 3/4/07
F.W. JKW	F.B. 07-008
File 02053204	Checked
Scale 1:2500	Approved
Plan Ref. 020532.04	



DIAGRAM



Tenancy measured in accordance with Net Lettable Area – Office Buildings (NLA) as defined in Property Council of Australia Limited March 1997 Method of Measurement.