



sketch plan. The correct.

**BENNETT**  
**AND**  
**FRANCIS**  
**PTV LTD**  
A.S.N.  
098 897 172  
Director  
**COMMON SEAL**

Date: 05/05/2008

18195037



(Being part of the Ground floor of an Office Building)

In Lot 1 on RP115818,  
Original Portion 136,  
Parish of Yeerongpilly  
County of Stanley.



Surveying, Cartography, Computing,  
Mapping, Town Planning.  
ACN. 053 307 172

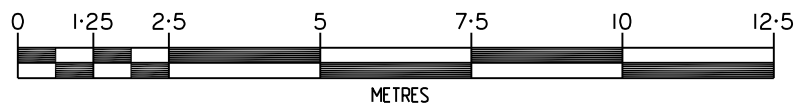
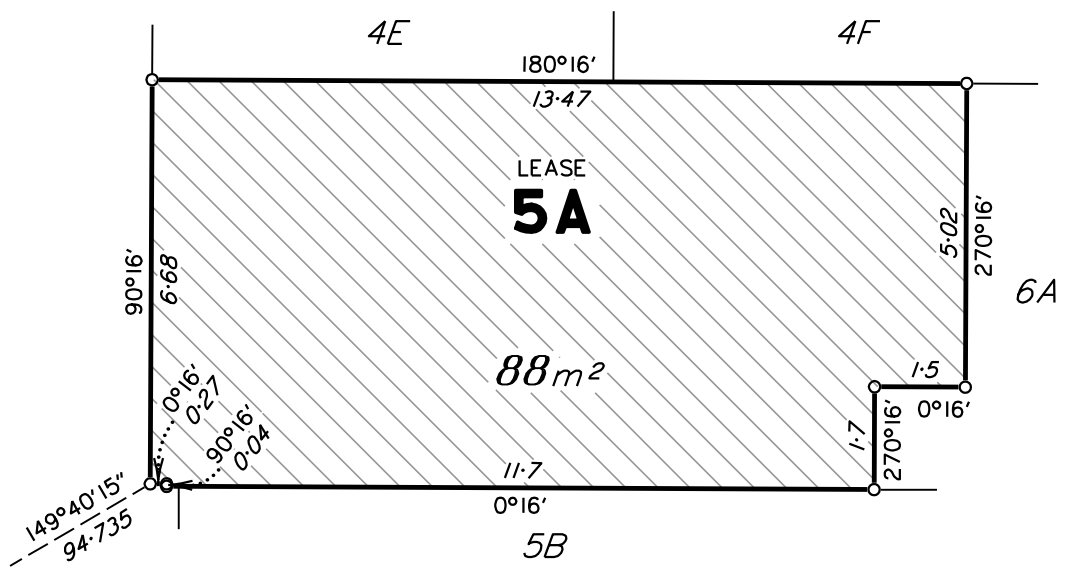
Drawn JC	Date 14.3.2008
F.W. SH	F.B. 08.006
File 02174101	Checked SH
Scale A4	Approved JRW

021741.01



# DIAGRAM

Sheet	of
<b>2</b>	<b>2</b>



Tenancy measured in accordance with Net Lettable Area –  
Office Buildings (NLA) as defined in Property Council of  
Australia Limited March 1997 Method of Measurement.

Plan Ref.
<b>021741.01</b>